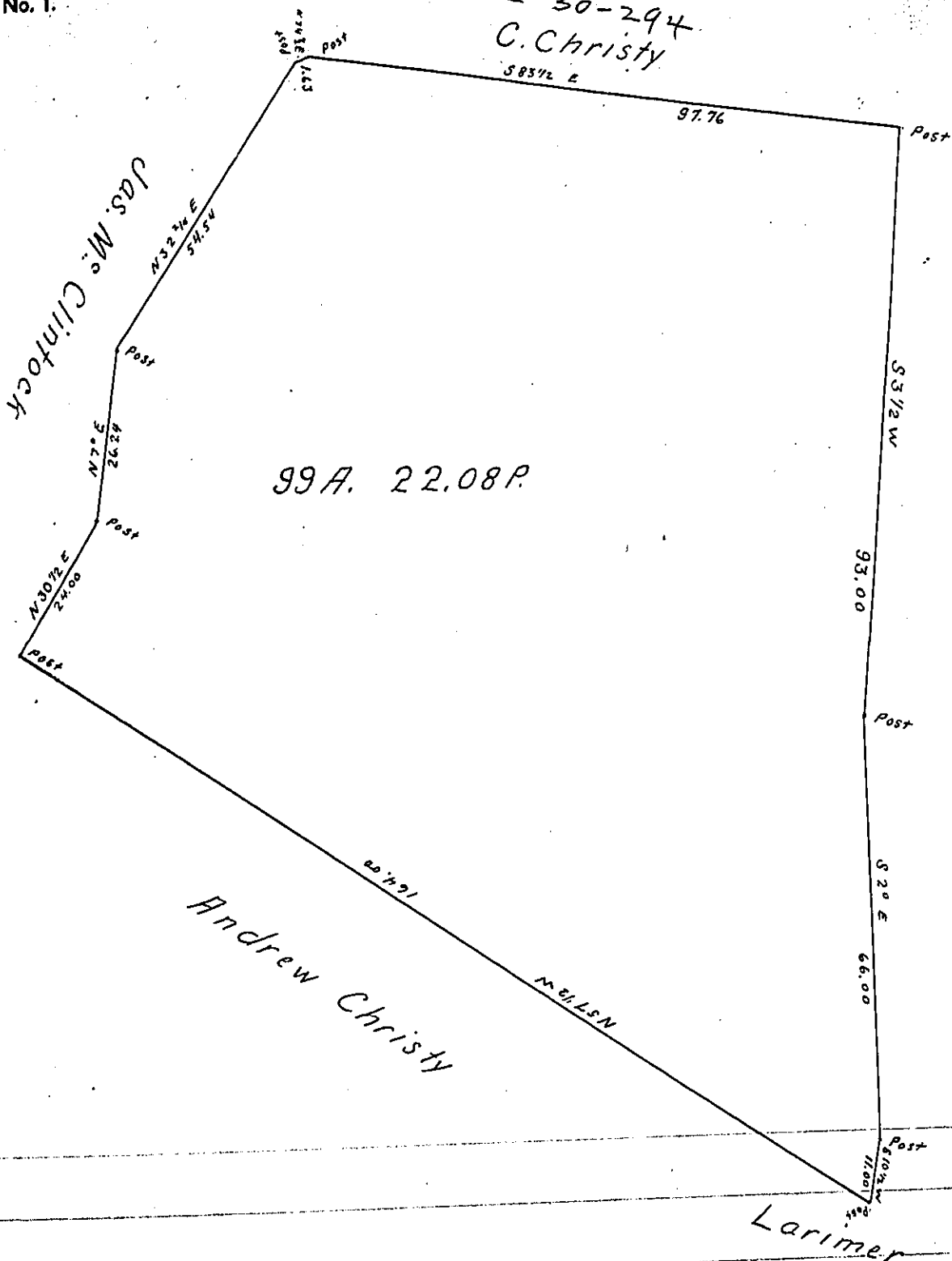


e-30-294
C. Christy
58 3/4 E

295
H74-558
5-171



99 A. 22.08 P.

Draft of a tract of land situated in Versailles Township Co. of Allegheny Penna.
 Containing 99 Acres and 22 ⁸/₁₀₀ Perches and Allowance of six per cent for
 roads. Surveyed for Cyrus Christy the 14th day of Sept 1885. Being part
 of a larger tract of 300 Ac. and 40 Per. & Allowance. Originally Surveyed
 in pursuance of a warrant granted to Precilla Coulter Dated Nov.
 12th 1787.

To the Honorable
 J. Simpson Africa
 Secretary of Internal Affairs

Chas. Davis Co. Sur.

IN TESTIMONY that the above is a copy of the original remaining on file in
 the Department of Internal Affairs of Pennsylvania, made
 conformably to an Act of Assembly approved the 16th day of
 February, 1833, I have hereunto set my Hand and caused
 the Seal of said Department to be affixed at Harrisburg,
 this thirtieth day of June 1904

James D. Brown
 Secretary of Internal Affairs.